

# MONTHLY MEMBERSHIP PROGRESS REPORT

District 14 H

Results as of: 3/31/2024

GMT:

LOCATION PENNSYLVANIA

GMT CA

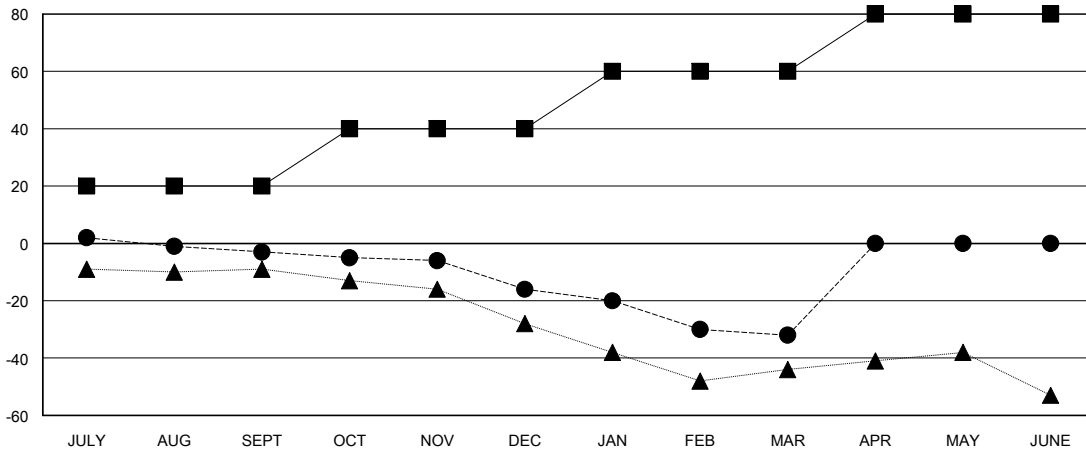
Clubs			
RESULTS FOR 2023-2024			
QUARTER	NEW CLUB GOAL	NEW CLUBS	DROPPED CLUBS
JULY/AUG/SEPT	0	0	0
OCT/NOV/DEC	1	0	0
JAN/FEB/MAR	0	0	0
APR/MAY/JUNE	0	0	0

Members			
RESULTS FOR 2023-2024			
QUARTER	MEMBER GROWTH NET GOAL	MEMBER GROWTH ACTUAL	DROPPED MEMBERS ACTUAL (including transfers)
JULY/AUG/SEPT	20	8	11
OCT/NOV/DEC	20	5	18
JAN/FEB/MAR	20	14	21
APR/MAY/JUNE	20	0	0

GOALS AND ACTUAL NEW CLUBS CUMULATIVE



GOALS AND ACTUAL MEMBERS CUMULATIVE



DROPPED CLUBS: 0	10 CLUBS OF 28 ADDED 1 OR MORE NEW MEMBERS	<b>GENDER DISTRIBUTION</b> MALE 482 (72.70%) FEMALE 181 (27.30%)
<b>DROPPED MEMBERS</b> DECEASED 7 CLUB CANCELLED 0 OTHER 43 TOTAL 50	<a href="#">CLICK HERE FOR CUMULATIVE MEMBERSHIP DATA</a>	TOTAL FAMILY UNIT MEMBERS 124 FAMILY MEMBERS PAYING HALF DUES 66